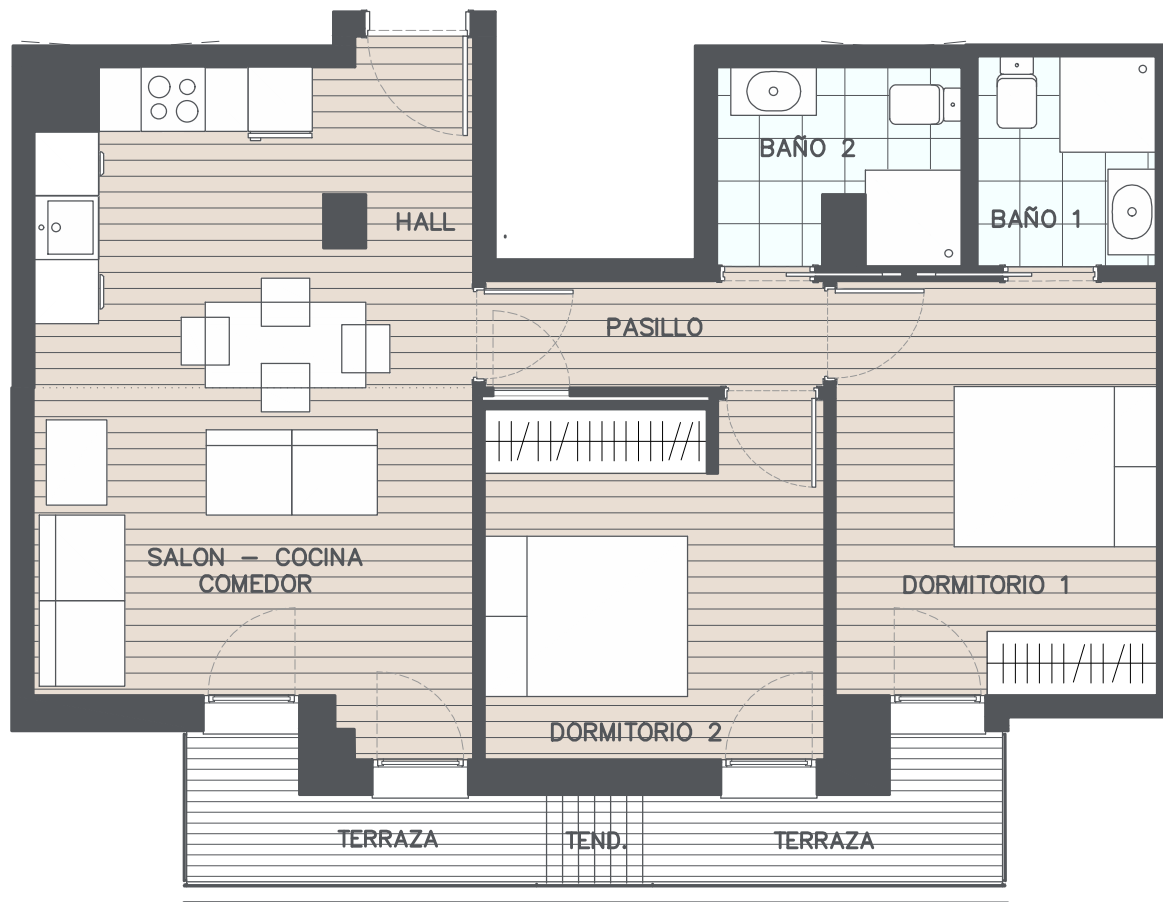
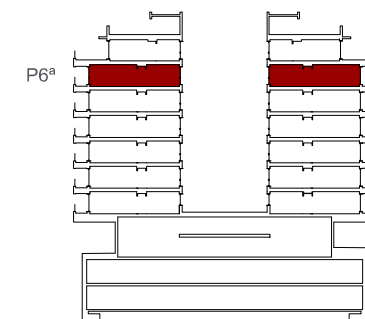


P2-6C



	S.UTIL	S.CONST.
HALL	2.15 m2	
SALÓN-COCINA-COMEDOR	22.52 m2	
DORMITORIO 1	11.68 m2	
DORMITORIO 2	10.47 m2	
BAÑO 1	3.30 m2	
BAÑO 2	4.01 m2	
PASILLO	3.18 m2	
TERRAZA	6.63 m2	4.00 m2
TENEDERO	0.86 m2	0.53 m2
TOTAL VIVIENDA INT.	57.31 m2	67.61 m2
TOTAL VIVIENDA EXT.	6.63 m2	4.53 m2



AV. ALTOS HORNOS DE BIZKAIA

