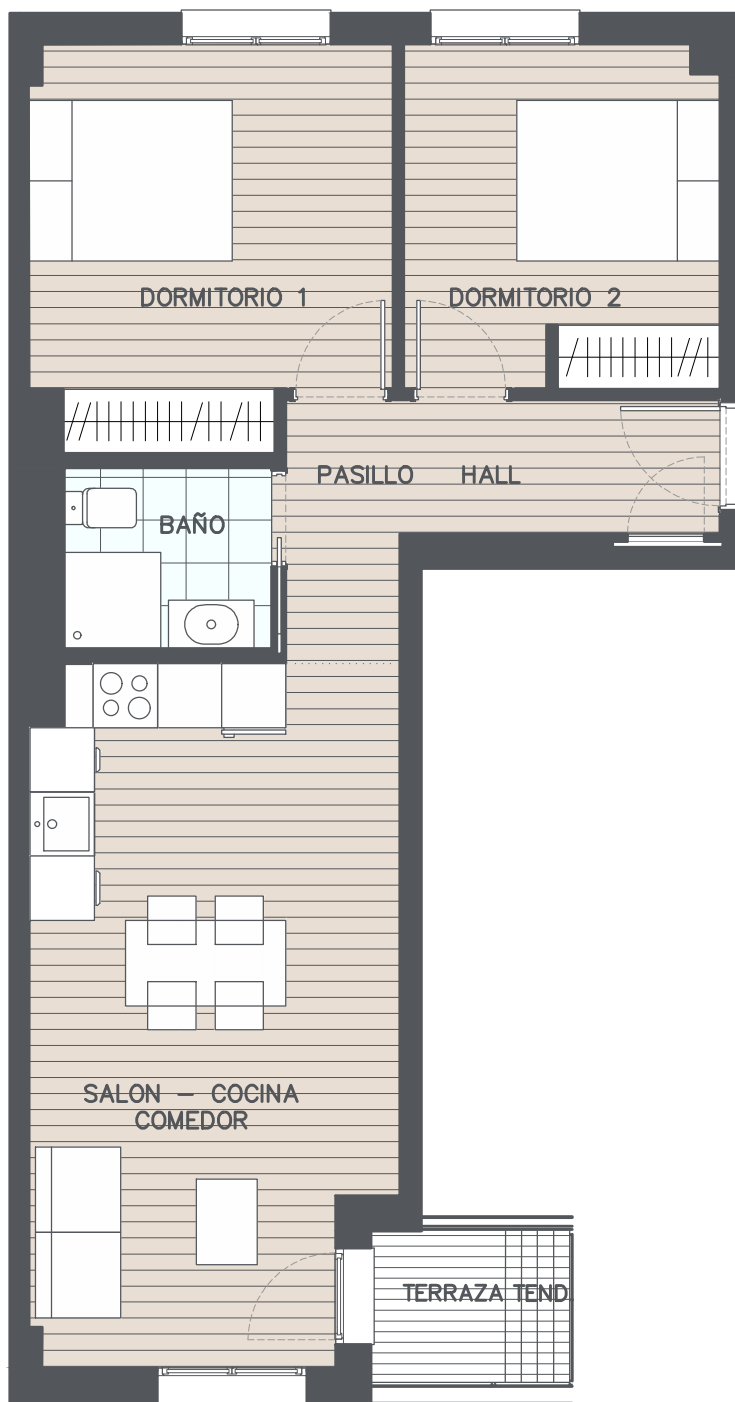


P2-3A



	S.UTIL	S.CONST.
HALL	5.42m2	
SALÓN-COC.-COMEDOR	21.48m2	
DORMITORIO 1	12.04m2	
DORMITORIO 2	9.40m2	
BAÑO	3.40m2	
PASILLO	2.58m2	
TERRAZA	1.62m2	0.92m2
TENEDERO	1.01m2	0.59m2
TOTAL VIVIENDA INT.	54.32m2	63.88m2
TOTAL VIVIENDA EXT.	2.63m2	1.51m2

