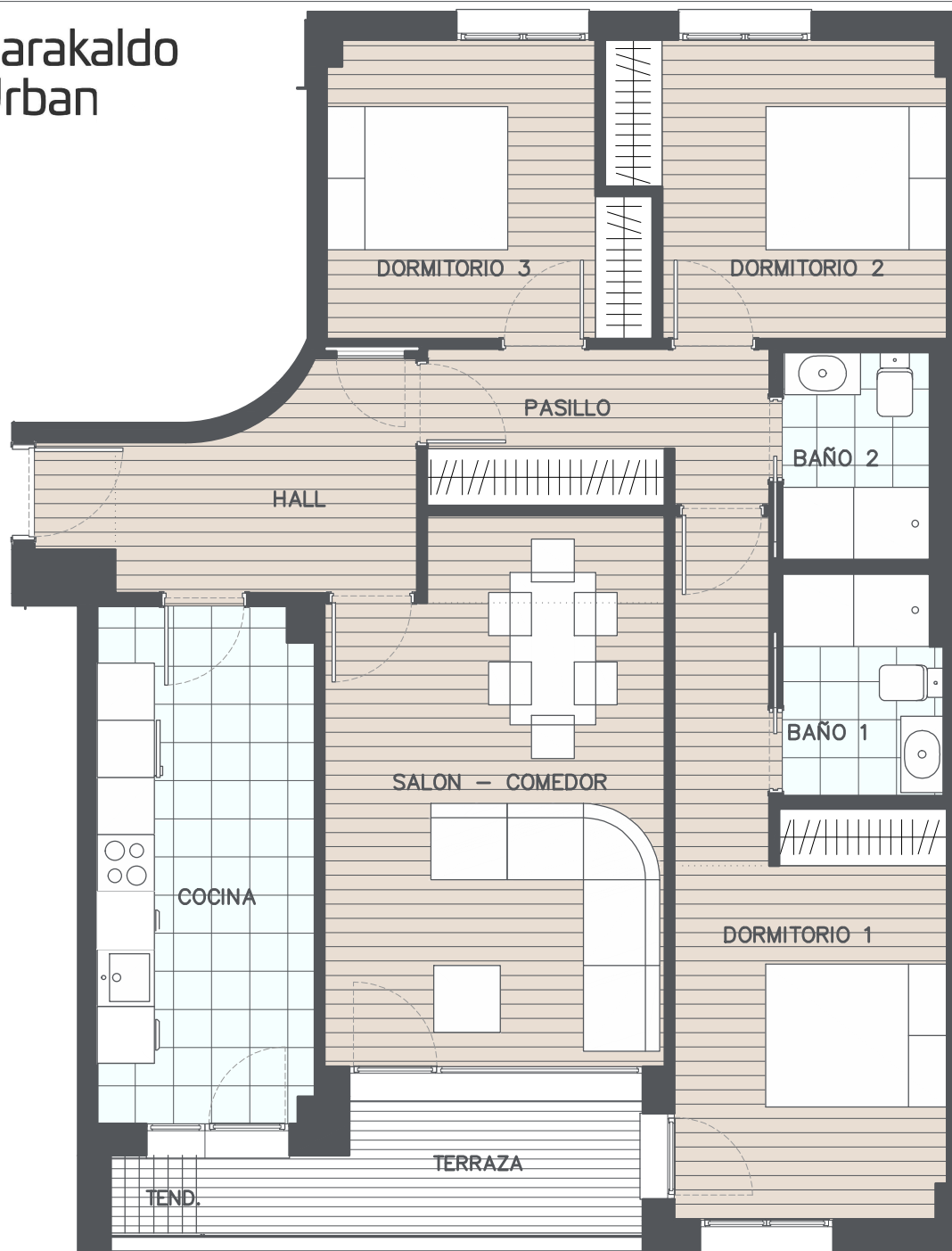


P3-5C



	S.UTIL	S.CONST.
HALL	7.26m2	
COCINA	12.24m2	
SALÓN-COMEDOR	19.67m2	
DORMITORIO 1	15.22m2	
DORMITORIO 2	10.18m2	
DORMITORIO 3	9.71m2	
BAÑO 1	3.74m2	
BAÑO 2	3.35m2	
PASILLO	5.88m2	
TERRAZA	5.59m2	3.25m2
TENDEDERO	0.81m2	0.50m2
TOTAL VIVIENDA INT.	87.25m2	101.33m2
TOTAL VIVIENDA EXT.	6.40m2	3.75m2

