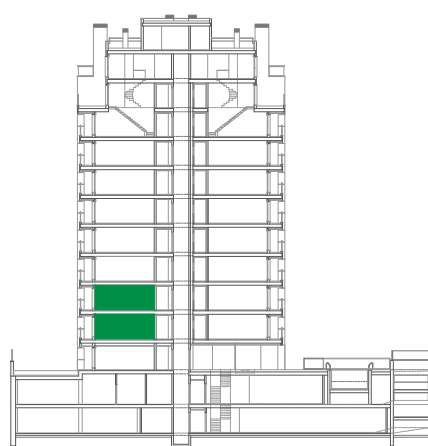
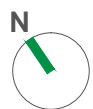
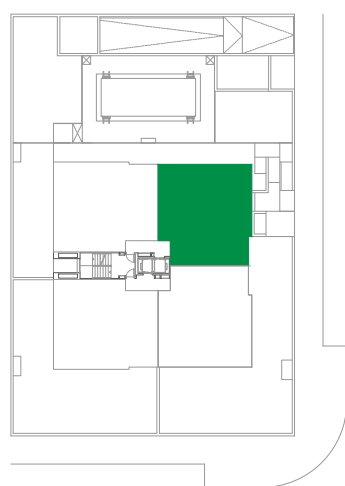
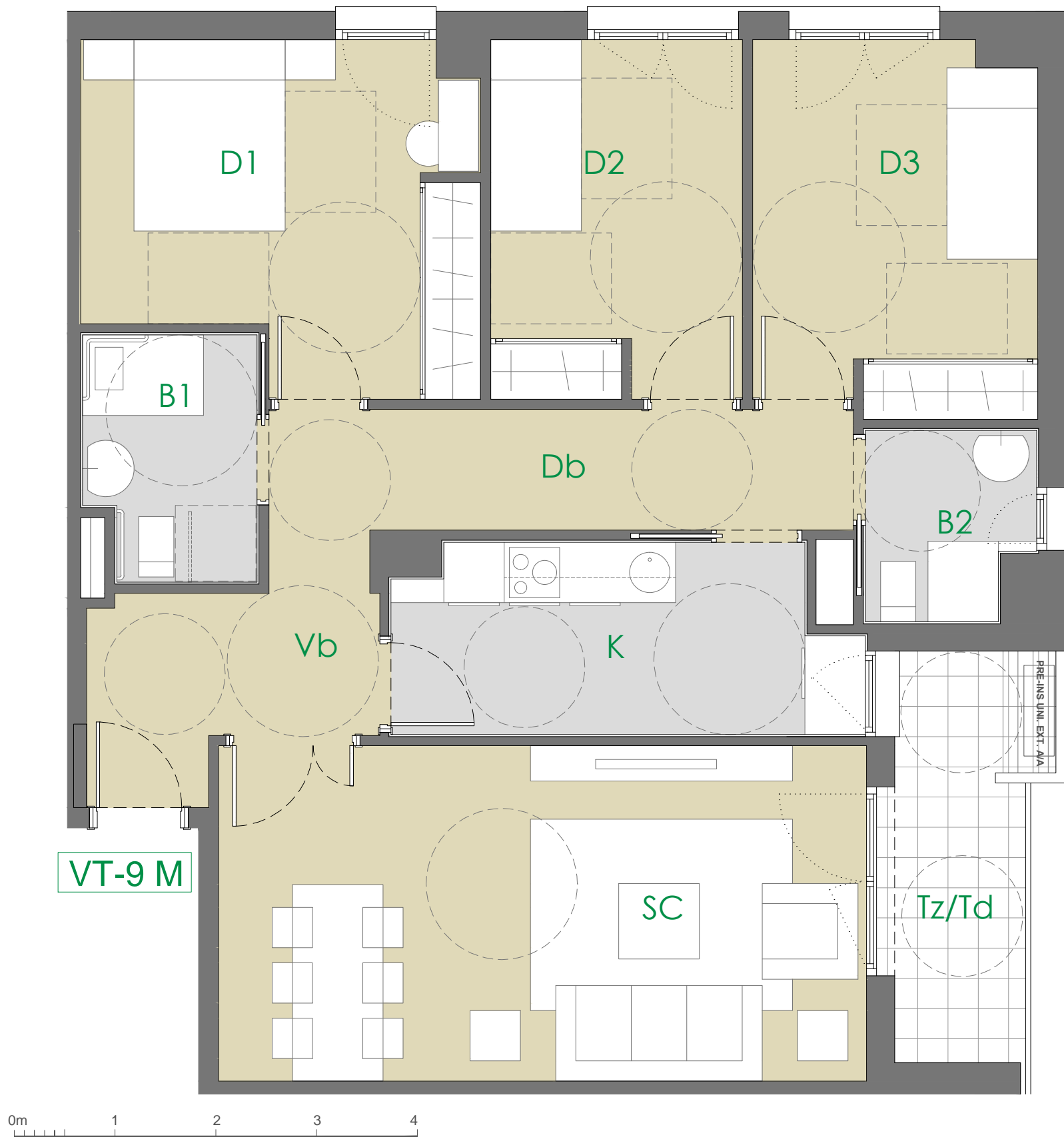


# VT9 M - 3 Dormitorios

## Plantas 1ª y 2ª (2 Uds)



| VIVIENDA TIPO 9 M              | 2 UDs                      |
|--------------------------------|----------------------------|
| VESTIBULO                      | 4.96 m <sup>2</sup>        |
| COCINA                         | 8.24 m <sup>2</sup>        |
| SALÓN-COMEDOR                  | 21.45 m <sup>2</sup>       |
| DISTRIBUIDOR                   | 7.59 m <sup>2</sup>        |
| BAÑO 1                         | 3.97 m <sup>2</sup>        |
| BAÑO 2                         | 2.93 m <sup>2</sup>        |
| DORMITORIO 1                   | 12.60 m <sup>2</sup>       |
| DORMITORIO 2                   | 8.89 m <sup>2</sup>        |
| DORMITORIO 3                   | 10.29 m <sup>2</sup>       |
| <b>TOTAL ÚTIL INTERIOR</b>     | <b>80.92 m<sup>2</sup></b> |
| TERRAZA/TENEDERO               | 5.97 m <sup>2</sup>        |
| <b>TOTAL ÚTIL EXTERIOR</b>     | <b>5.97 m<sup>2</sup></b>  |
| <b>TOTAL ÚTIL (COMPUTABLE)</b> | <b>83.91 m<sup>2</sup></b> |

**Edificación en Torre Parcela T10A**  
 UZP-2.01 El Cañaveral Madrid