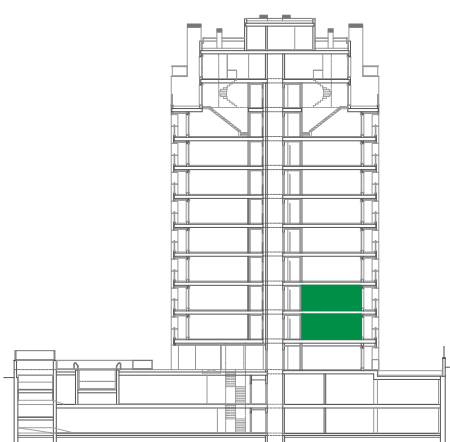
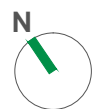
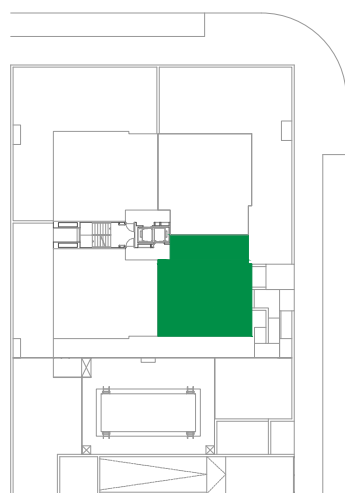
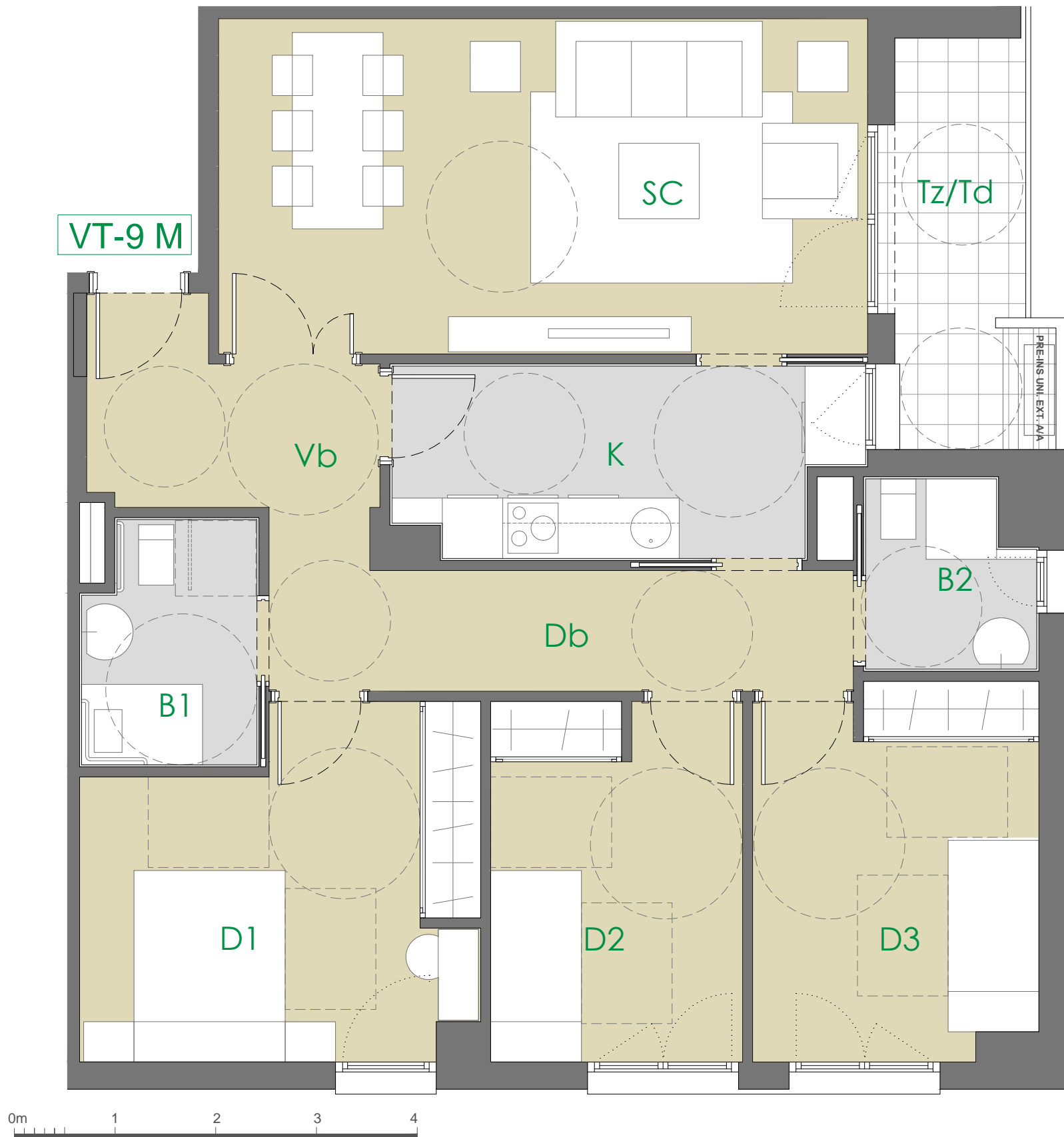


# VT9M - 3 Dormitorios

## Plantas 1ª y 2ª (2 Uds)



VIVIENDA TIPO 9M	2 UDs
VESTIBULO	4.96 m <sup>2</sup>
COCINA	8.24 m <sup>2</sup>
SALÓN-COMEDOR	21.45 m <sup>2</sup>
DISTRIBUIDOR	7.59 m <sup>2</sup>
BAÑO 1	3.97 m <sup>2</sup>
BAÑO 2	2.93 m <sup>2</sup>
DORMITORIO 1	12.60 m <sup>2</sup>
DORMITORIO 2	8.89 m <sup>2</sup>
DORMITORIO 3	10.29 m <sup>2</sup>
<b>TOTAL ÚTIL INTERIOR</b>	<b>80.92 m<sup>2</sup></b>
TERRAZA/TENDEDERO	5.97 m <sup>2</sup>
<b>TOTAL ÚTIL EXTERIOR</b>	<b>5.97 m<sup>2</sup></b>
<b>TOTAL ÚTIL (COMPUTABLE)</b>	<b>83.91 m<sup>2</sup></b>

**Edificación en Torre Parcela T7A**  
 UZP-2.01 El Cañaveral Madrid