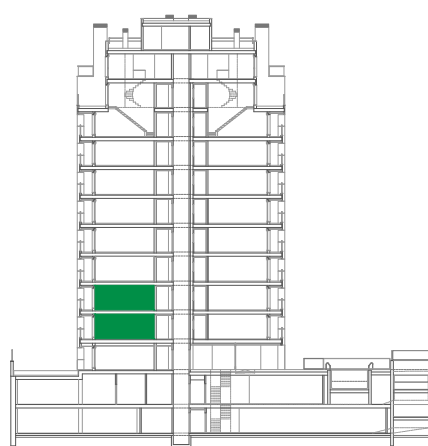
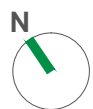
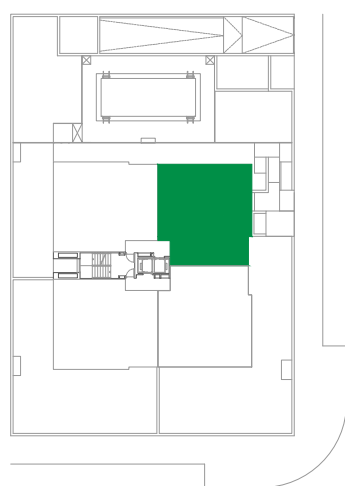
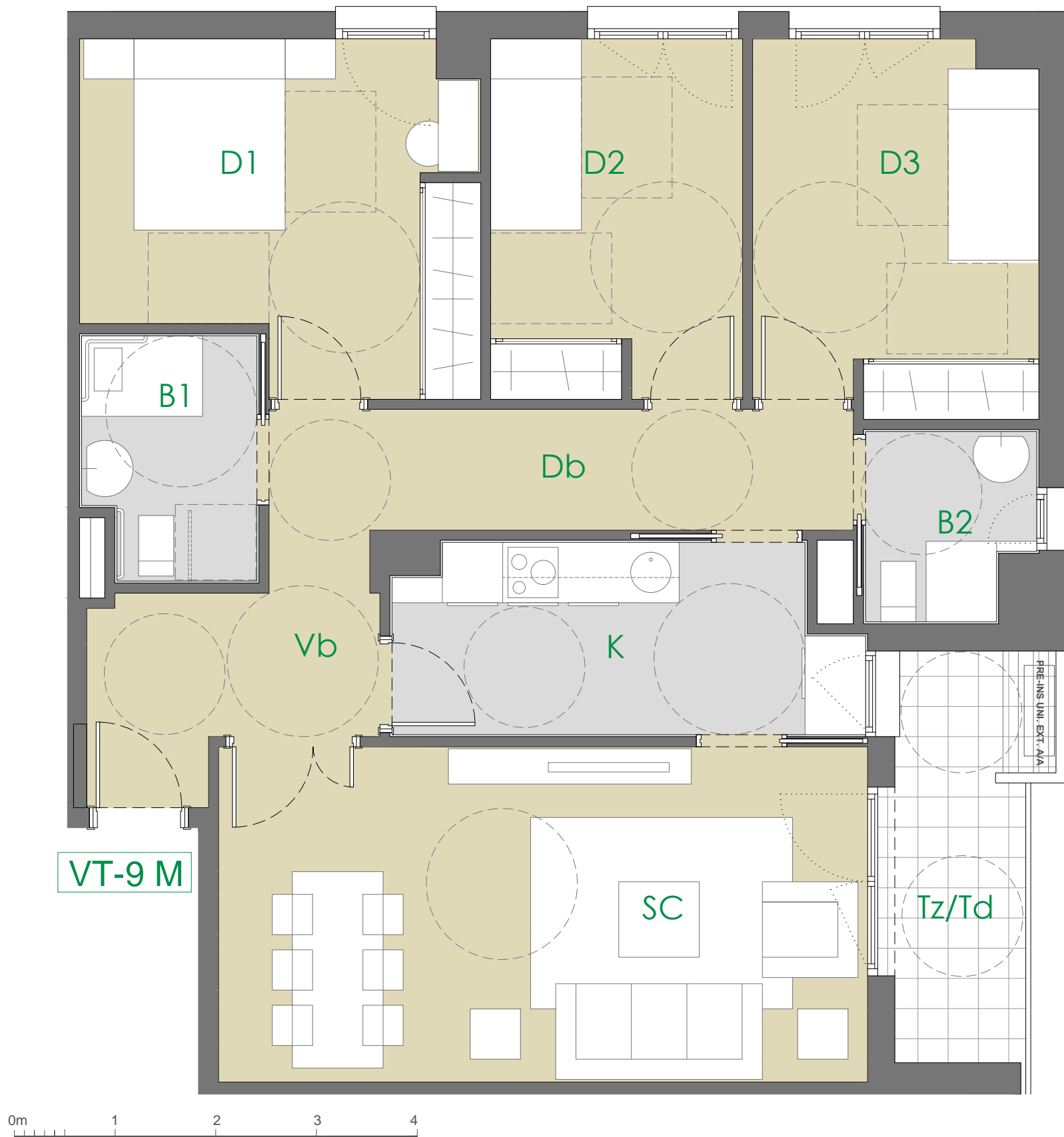


VT9 M - 3 Dormitorios

Plantas 1ª y 2ª (2 Uds)



VIVIENDA TIPO 9 M	2 UDs
VESTIBULO	4.96 m ²
COCINA	8.24 m ²
SALÓN-COMEDOR	21.45 m ²
DISTRIBUIDOR	7.59 m ²
BAÑO 1	3.97 m ²
BAÑO 2	2.93 m ²
DORMITORIO 1	12.60 m ²
DORMITORIO 2	8.89 m ²
DORMITORIO 3	10.29 m ²
TOTAL ÚTIL INTERIOR	80.92 m²
TERRAZA/TENEDERO	5.97 m ²
TOTAL ÚTIL EXTERIOR	5.97 m²
TOTAL ÚTIL (COMPUTABLE)	83.91 m²

Edificación en Torre Parcela T10A
UZF-2.01 El Cañaveral Madrid