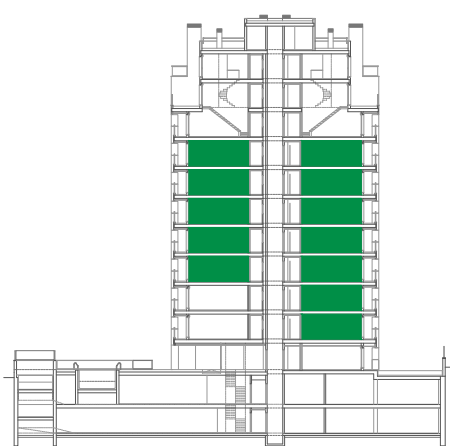
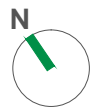
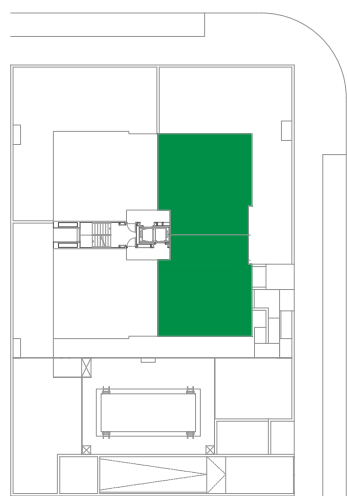
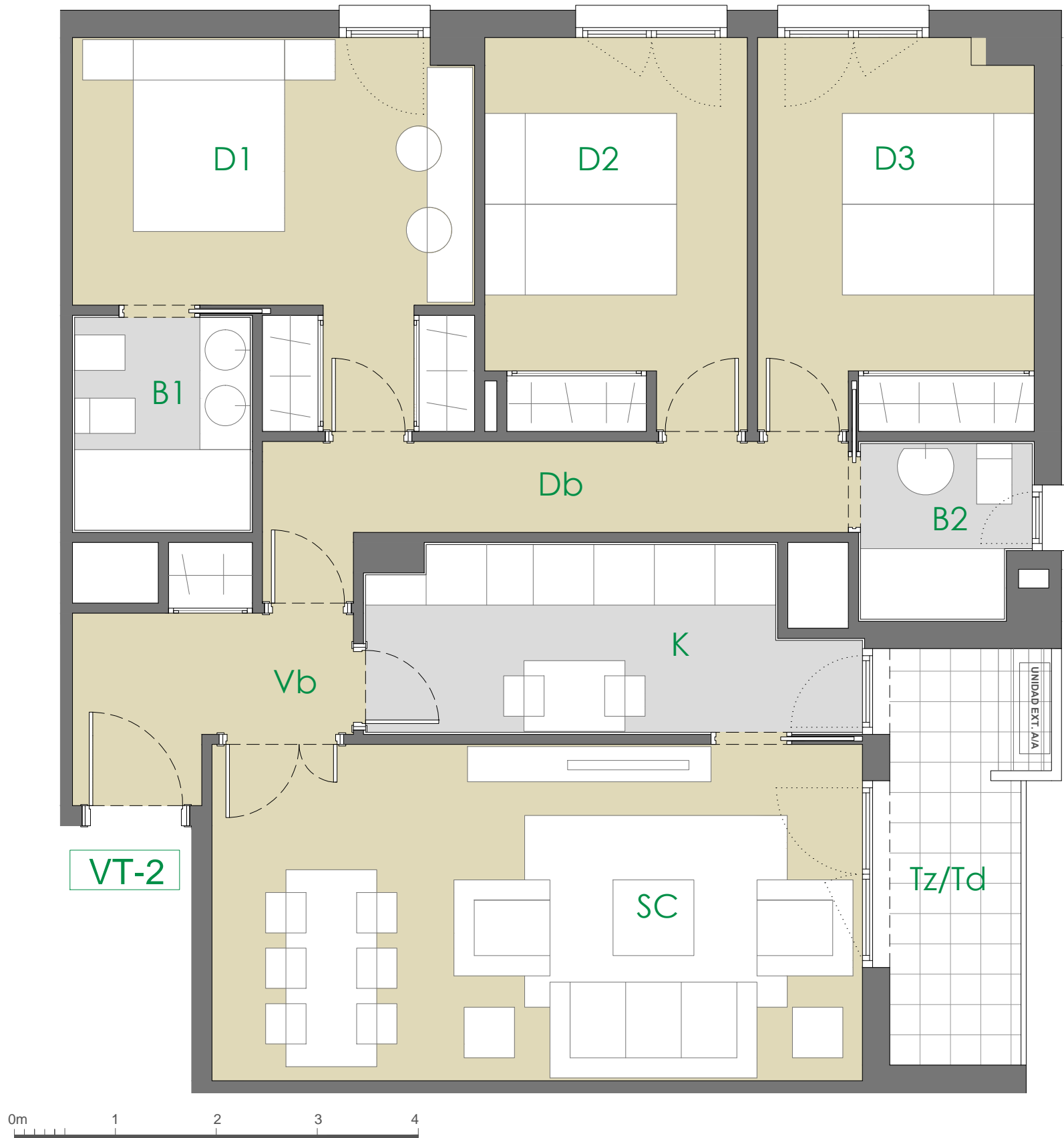


VT2 - 3 Dormitorios

Plantas 1ª a 7ª (12 Uds)



VIVIENDA TIPO 2	12 UDs
VESTIBULO	4.82 m ²
COCINA	8.15 m ²
SALÓN-COMEDOR	21.45 m ²
DISTRIBUIDOR	5.85 m ²
BAÑO 1	3.67 m ²
BAÑO 2	2.77 m ²
DORMITORIO 1	12.93 m ²
DORMITORIO 2	9.95 m ²
DORMITORIO 3	10.45 m ²
TOTAL ÚTIL INTERIOR	80.04 m²
TERRAZA/TENEDERO	6.15 m ²
TOTAL ÚTIL EXTERIOR	6.15 m²
TOTAL ÚTIL (COMPUTABLE)	83.12 m²

Edificación en Torre Parcela T7A
 UZP-2.01 El Cañaveral Madrid