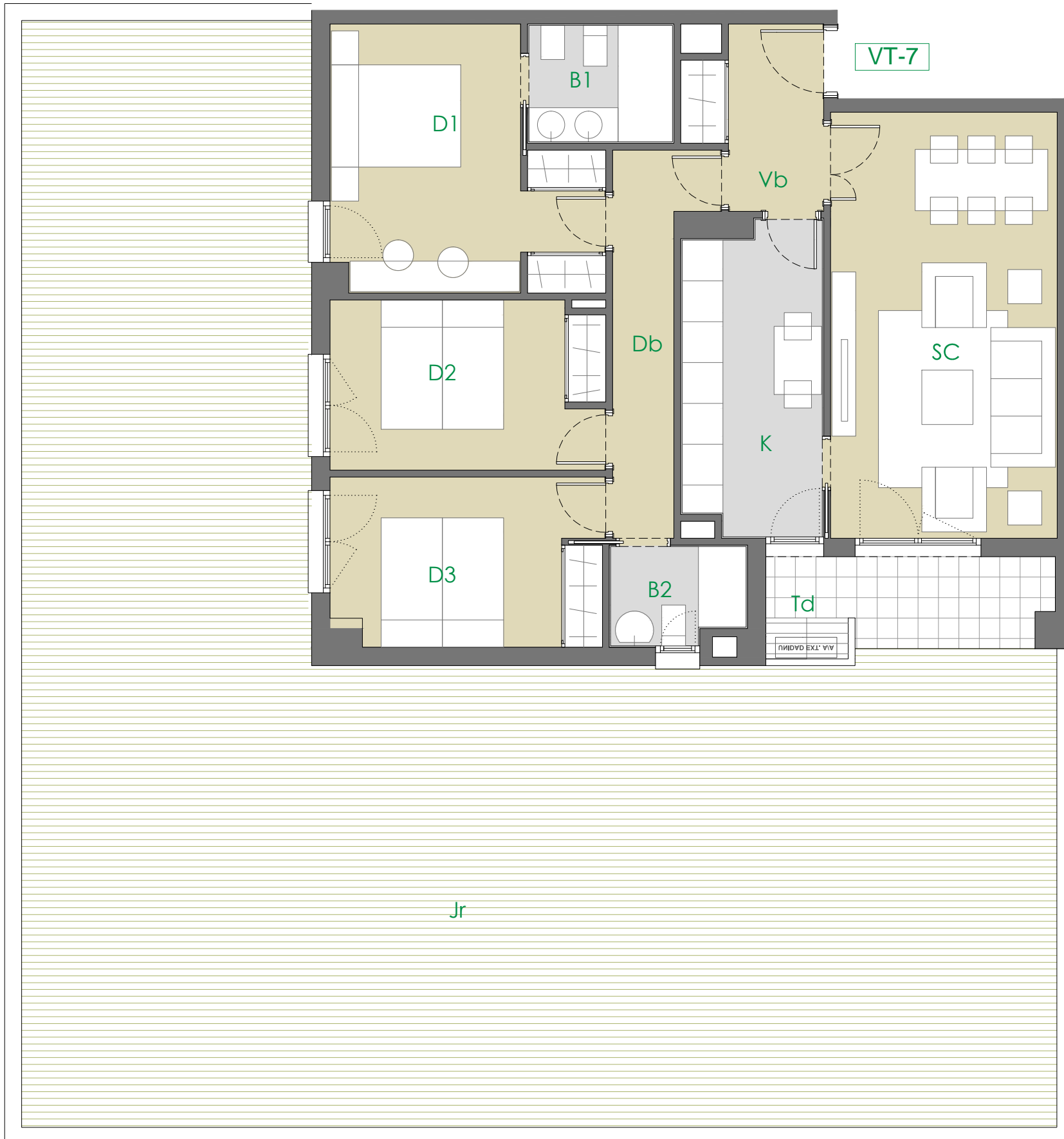
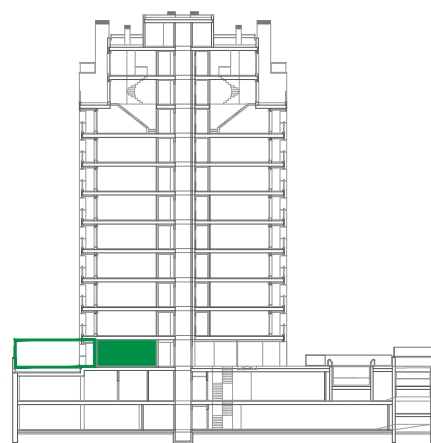
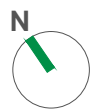
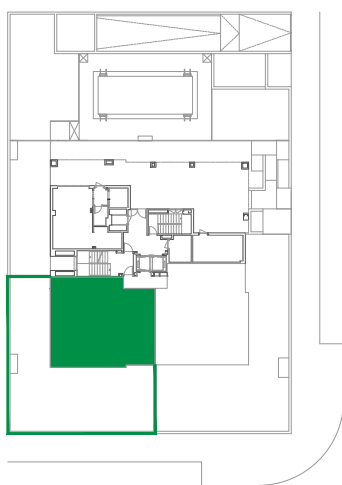


VT7 - 3 Dormitorios

Planta Baja (1 Ud)



0m 1 2 3 4 5



VIVIENDA TIPO 7 1 UD

VESTIBULO	4.70 m ²
COCINA	9.07 m ²
SALÓN-COMEDOR	20.83 m ²
DISTRIBUIDOR	5.76 m ²
BAÑO 1	3.61 m ²
BAÑO 2	2.71 m ²
DORMITORIO 1	13.44 m ²
DORMITORIO 2	9.93 m ²
DORMITORIO 3	9.78 m ²

TOTAL ÚTIL INTERIOR 79.83 m²

TENEDERO	6.19 m ²
JARDIN	144.17 m ²

TOTAL ÚTIL EXTERIOR 150.36 m²

TOTAL ÚTIL (COMPUTABLE) 87.81 m²

Edificación en Torre Parcela T10A
UZP-2.01 El Cañaveral Madrid